

# Japanese wildlife management and local community



**Eri KATO**

A doctoral student

United Graduate School of agriculture Science,  
Tokyo University of Agriculture and Technology

# Human- Wildlife conflict

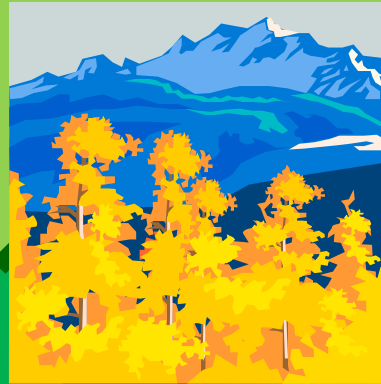
- In zones surrounding national parks and other protected areas, borders between “human” and “wild” spaces have become blurred
- The resulting human–wildlife conflict (HWC) often undermines local support for conservation

(Ogra 2007)

⌘ HWC: crop damage, live- stock predation, property damage, and attack of humans

Area around  
Protected area

Protected  
Area



Wildlife

Local  
Residents



# Japan's Cultural Landscape

A scenic view of a Japanese Satoyama landscape. In the background, a large, forested mountain rises under a clear blue sky. The middle ground shows a valley with several traditional Japanese houses with tiled roofs, interspersed with green rice fields. In the foreground, a river flows through a lush green area. The image is annotated with several text boxes: a green box at the top left with the title 'Japan's Cultural Landscape', two red boxes on the mountain labeled 'Satoyama', two yellow boxes on the houses labeled 'Houses', a grey box on the rice fields labeled 'Rice Field', and a grey box on the river labeled 'River'.

*Satoyama*

*Satoyama*

*Houses*

*Houses*

*Rice Field*

*River*

# Local community

- Natural Resource management
  - Ex) *Satoyama*
  - Fuel, fertilizer, food, and other commodities

- Since the 1950s

- ✓ The former balance of nature to be lost
- ✓ Some mammal species are increasing

- Depopulation and

One cause of the wildlife  
conflict

# Recent Natural Resource Management

- Is there no natural resource management in local community ?



- The management is being continued ***changing its style***

(Sato2001)

- New managing body for human-wildlife conflict (=wildlife management)

(Suzuki2013)

# Preceding studies

## Wildlife management

- Material of management (Takeyama et al2010)

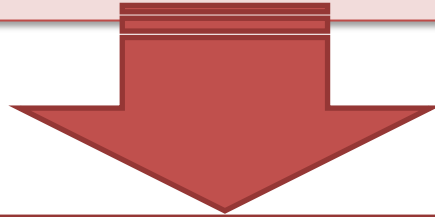
There are no investigates the relationship with recent natural resource management and wildlife management

## Resource management

- New stakeholder (Yamamoto2010, Hiroshige2012)
- Agricultural policy (Kaneko2009, Honda2010)

# Objective

Investigate the relationship of wildlife management and recent natural resource management by a local community

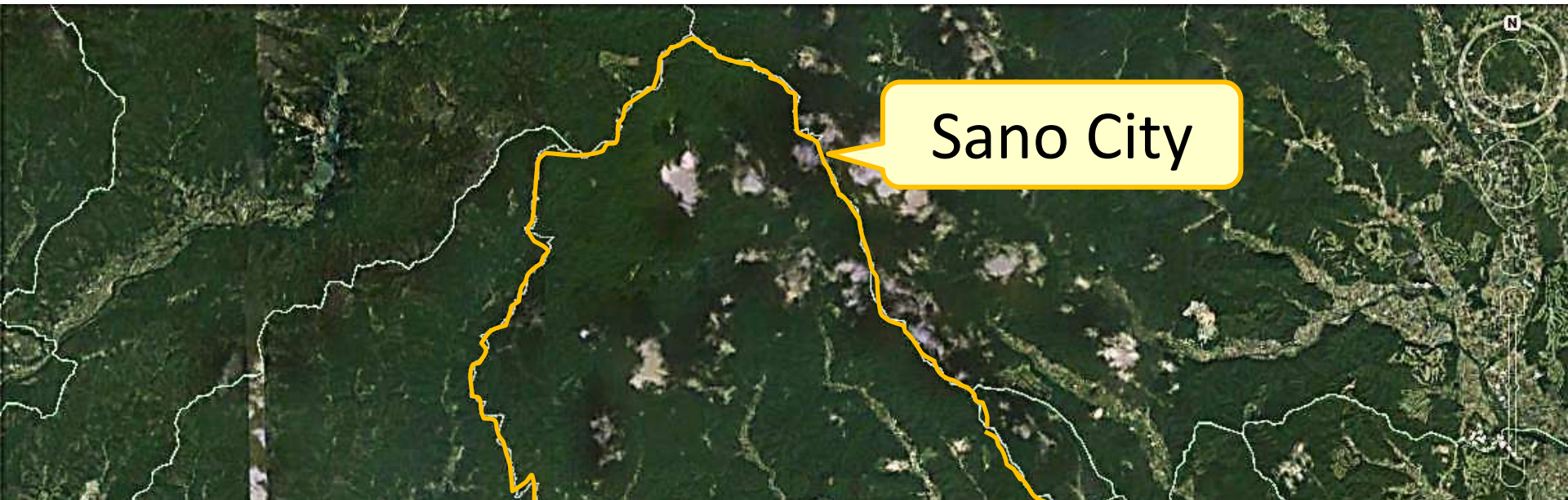


- ✓ To examine future wildlife management and protected areas management in Asia
- ✓ To think about a coexistence of wildlife, nature and human



# Study Site

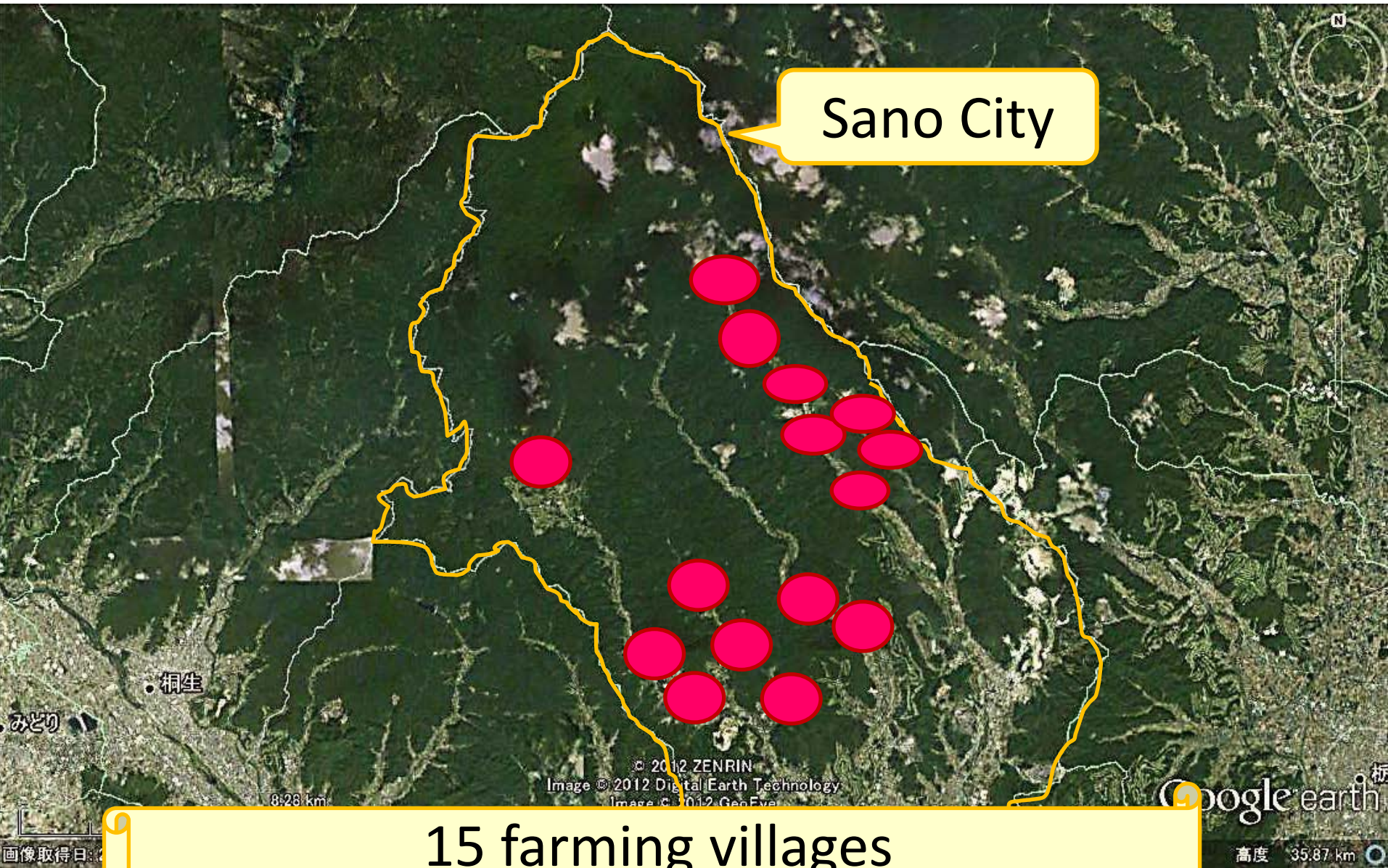




Sano City

- **Occupations:** Companies outside the villages
- **Agriculture:** Most personal consumption
- **Human-wildlife conflict:** From about ten years ago  
Most by wild boars, also by deer, monkeys, and bears
- **Protected Area around:** Wildlife sanctuaries  
Nikko National Park





Sano City

15 farming villages  
in hilly and mountainous areas





Sika deer



Wild boars



*Mammals around the villages*

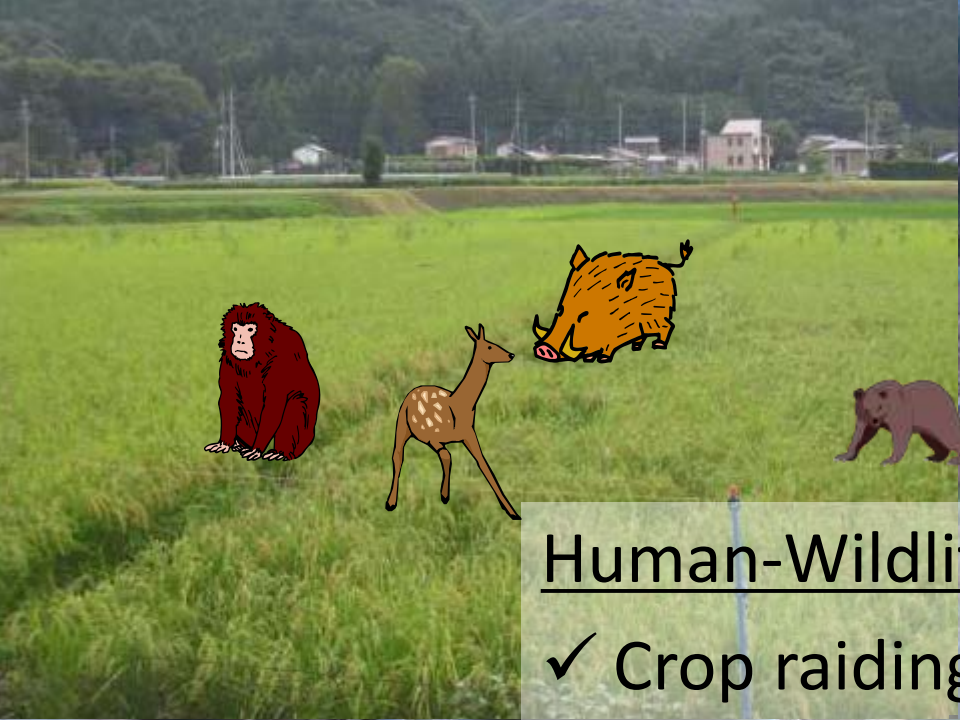


Asian black bear



Japanese macaque





## Human-Wildlife conflict

- ✓ Crop raiding
- ✓ Property damage
- ✓ Fear
- ✓ Human casualties etc.







## Management of the damages

- ✓ Pacing net, electric/wire messed fence
- ✓ Frightening
- ✓ Trapping
- ✓ Hunting





Managed

# Natural Resources management



*Abandoned*



✓ River

✓ Road

✓ Ridge

✓ (Border of) forest

✓ Agricultural channel

# Methods

- ✓ Semi-structured interviews
  - ✓ the current state of human-wildlife conflict
  - ✓ Wildlife management by local community
  - ✓ natural resources management and other local activities
  
- ✓ From August 2010 to October 2013
  - ✓ Leaders of wildlife management
  - ✓ Chairmen of the villages



# Results



# Wildlife management

Village	Managing body	Activity
A	Old	○
B	Old	○
C	Old	○
D		×
E	New	○
F		
G		
H		
I		
J		
K	New	△
L	New	△
M	New	△
N	Old	△
O	New	△

✓ The activity doesn't related managing body whether it's organized new or not

○	High
△	Low
×	None

# Local organization's objective

Village	WM, NRM, Event	WM, NRM	WM
A	◎		
B	◎		
C	◎		
D			
E		◎	
F			○
G			
H		◎	◎
I			◎
J		◎	△
K			△
L			△
M			△
N		◎	
O			△

Not only for WM, but also for NRM and event

Low activity

◎	High
○	Medium
△	Low



# Activities of WM, NRM, and Event

All village

Village	WM	NRM	Event
A	○	○	○
B	○	○	○
C	○	○	○
D	x	○	○
E	○	○	△
F	△	○	△
G	x	○	△
H	○	○	○
I	○	○	○
J	○	○	○
K	△	○	○
L	△	○	○
M	△	○	○
N	△	○	△
O	△	○	○

The villages which have WM body have other active body

○	High
△	Low
x	None



# Discussion

- ✓ The activity of managing body is relate to its objective
- ✓ Managing body only for wildlife management has low activity

Think about whole village activity is a key to decrease human-wildlife conflict

# Conclusion

## In Asia

Many people live around the protected area, and their community becomes an important stakeholder

- ◆ Must focus on these small local activities in the management of protected area
  - ✓ Promoting activities aimed at more than wildlife and/or protected area

Thank you !!

